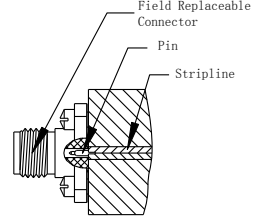
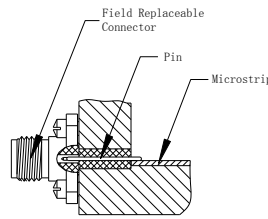
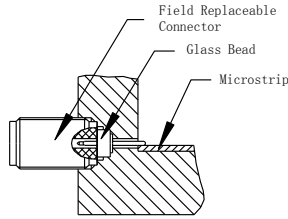
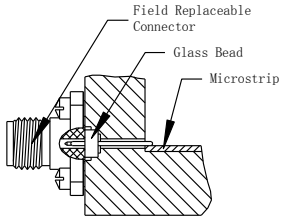


Your No. 1 European Source for RF & Microwave Components

Field Replaceable Connectors

Product Application



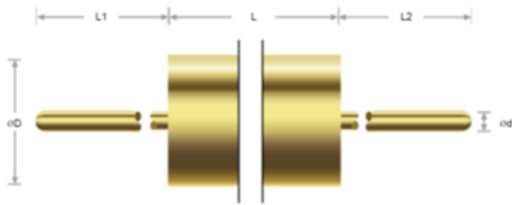
Glass bead Transitions to Microstrip and Stripline Circuits in conjunction with replaceable flange connector

Glass bead Transitions to Microstrip and Stripline Circuits in conjunction with replaceable screw thread connector

Launch Pin & Dielectric Transitions to Microstrip and Stripline Circuits
*refer to combination type connector

Pin/Tab Transitions to Microstrip and Stripline Circuits
*refer to combination type connector

Glass Bead Commonly Used

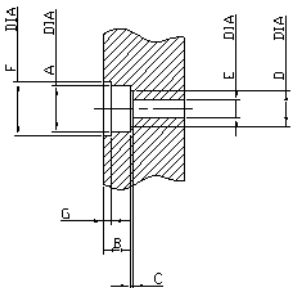


Commonly Used Size (Recommended)

d	0.23mm 0.009"	0.30mm 0.012"	0.38mm 0.015"	0.46mm 0.018"	0.51mm 0.020"
D	1.73mm 0.068"	1.93mm 0.076"	2.49mm 0.098"	2.79mm 0.110"	4.01mm 0.158"
L	1.40mm 0.055"	1.40mm 0.055"	1.57mm 0.062"	1.52mm 0.06"	1.52mm 0.06"
L1	A variety of sizes available				
L2	A variety of sizes available				

NOTE: Both ends of L1/L2 can insert into connector, depth less than 2mm

Glass Bead Installation Dimension (FYI)



Pin Diameter	0.23mm 0.009"	0.30mm 0.012"	0.38mm 0.015"	0.46mm 0.018"	0.51mm 0.020"
A	Glass bead dimension D&L				
B	Glass bead dimension D&L				
C	0.15-0.20mm 0.006-0.008"	0.06-0.09mm 0.0025-0.0035"	0.13-0.18mm 0.005-0.007"	0.18-0.23mm 0.007-0.009"	0.23-0.25mm 0.009-0.010"
D	0.77-0.82mm 0.0302-0.0322"	1.65-1.70mm 0.065-0.067"	1.98-2.03mm 0.078-0.080"	2.13-2.18mm 0.084-0.086"	3.15-3.20mm 0.124-0.126"
E	This is 50Ω transmission line, in accordance with PIN diameter conversion, E=PIN diameter *2.3.				
F	Solder capture slot, common dimension is F=A+1mm.				
G	Solder capture slot, common dimension is 0.5mm.				

