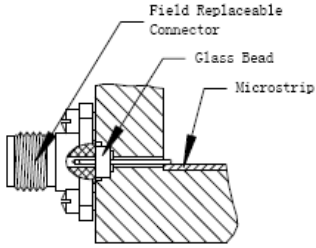


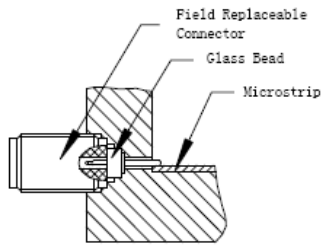
Your No. 1 European Source for RF & Microwave Components

## 2.92mm Replaceable Connectors

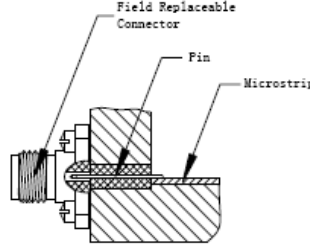
### Product Application



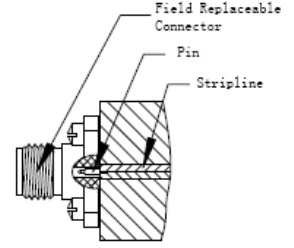
Glass bead Transitions to Microstrip and Stripline Circuits in conjunction with replaceable flange connector



Glass bead Transitions to Microstrip and Stripline Circuits in conjunction with replaceable screw thread connector

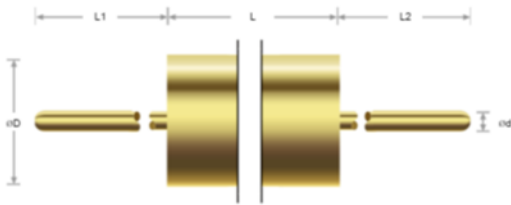


Launch Pin & Dielectric Transitions to Microstrip and Stripline Circuits  
\*refer to combination type connector



Pin/Tab Transitions to Microstrip and Stripline Circuits  
\*refer to combination type connector

### Glass Bead Commonly Used Size

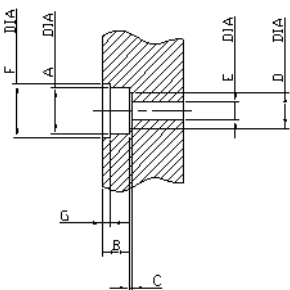


### Commonly Used Size (Recommended)

d	0.23mm 0.009"	0.30mm 0.012"	0.38mm 0.015"	0.46mm 0.018"	0.51mm 0.020"
D	1.73mm 0.068"	1.93mm 0.076"	2.49mm 0.098"	2.79mm 0.110"	4.01mm 0.158"
L	1.40mm 0.055"	1.40mm 0.055"	1.57mm 0.062"	1.52mm 0.06"	1.52mm 0.06"
L1	A variety of sizes available				
L2	A variety of sizes available				

NOTE: Both ends of L1/L2 can insert into connector, depth less than 2mm

### Glass Bead Installation Dimension (FYI)



Pin Diameter	0.23mm 0.009"	0.30mm 0.012"	0.38mm 0.015"	0.46mm 0.018"	0.51mm 0.020"
A	Glass bead dimension D&L				
B	Glass bead dimension D&L				
C	0.15-0.20mm 0.006-0.008"	0.06-0.09mm 0.0025-0.0035"	0.13-0.18mm 0.005-0.007"	0.18-0.23mm 0.007-0.009"	0.23-0.25mm 0.009-0.010"
D	0.77-0.82mm 0.0302-0.0322"	1.65-1.70mm 0.065-0.067"	1.98-2.03mm 0.078-0.080"	2.13-2.18mm 0.084-0.086"	3.15-3.20mm 0.124-0.126"
E	This is 50Ω transmission line, in accordance with PIN diameter conversion, E=PIN diameter *2.3.				
F	Solder capture slot, common dimension is F=A+1mm.				
G	Solder capture slot, common dimension is 0.5mm.				