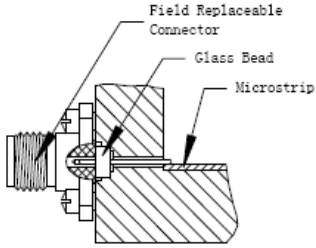


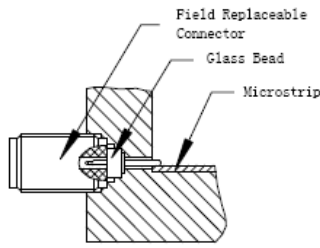
Your No. 1 European Source for RF & Microwave Components

2.4mm Replaceable Connectors

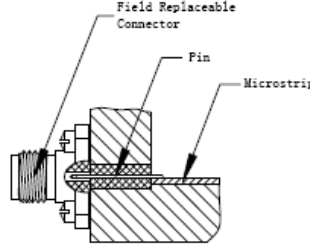
Product Application



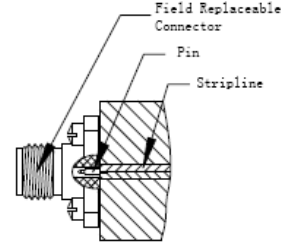
Glass bead Transitions to Microstrip and Stripline Circuits in conjunction with replaceable flange connector



Glass bead Transitions to Microstrip and Stripline Circuits in conjunction with replaceable screw thread connector

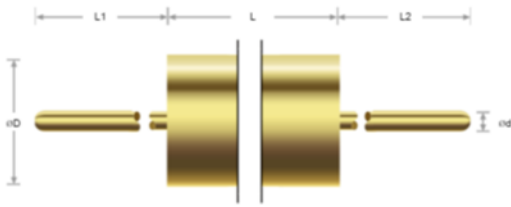


Launch Pin & Dielectric Transitions to Microstrip and Stripline Circuits
*refer to combination type connector



Pin/Tab Transitions to Microstrip and Stripline Circuits
*refer to combination type connector

Glass Bead Commonly Used Size

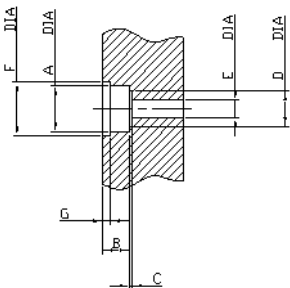


Commonly Used Size (Recommended)

d	0.23mm 0.009"	0.30mm 0.012"	0.51mm 0.020"
D	1.73mm 0.068"	1.93mm 0.076"	4.01mm 0.158"
L	1.40mm 0.055"	1.40mm 0.055"	1.52mm 0.06"
L1	A variety of sizes available		
L2	A variety of sizes available		

NOTE: Both ends of L1/L2 can insert into connector, depth less than 2mm

Glass Bead Installation Dimension (FYI)



Pin Diameter	0.23mm 0.009"	0.30mm 0.012"	0.51mm 0.020"
A	Glass bead dimension D&L		
B			
C	0.15-0.20mm 0.006-0.008"	0.06-0.09mm 0.0025-0.0035"	0.23-0.25mm 0.009-0.010"
D	0.77-0.82mm 0.0302-0.0322"	1.65-1.70mm 0.065-0.067"	3.15-3.20mm 0.124-0.126"
E	This is 50Ω transmission line, in accordance with PIN diameter conversion, E=PIN diameter *2.3.		
F	Solder capture slot, common dimension is F=A+1mm.		
G	Solder capture slot, common dimension is 0.5mm.		

